



FUNCTION SETTING

- Follow the instructions in the Local Setup Procedure, which is supplied with the remote control, in accordance with the installed condition. After the power is turned on, perform the Function Setting on the remote control.
- The settings may be selected between the following two: Function Number or Setting Value.
- Settings will not be changed if invalid numbers or setting values are selected.

Setting the Ceiling Height

- Select the setting values in the table below according to the height of the ceiling. (The unit is factory-set to "00".)

Setting Description	Function Number	Setting Value
Standard (2.3 m to 3.0 m)	20	00
High ceiling (3.0 m or more)		01

Setting the Filter Sign

- The indoor unit has a sign to inform the user that it is time to clean the filter.
- Select the time setting for the filter sign display interval in the table below according to the amount of dust or debris in the room. (The unit is factory-set to "00".)
- If you do not wish the filter sign to be displayed, select the setting value for "No indication".

Setting Description	Function Number	Setting Value
Standard (2,500 hours)	11	00
Long interval (4,400 hours)		01
Short interval (1,250 hours)		02
No indication		03

Setting the Cooler Room Temperature Correction

- Depending on the installed environment, the room temperature sensor may require a correction. The settings may be selected as shown in the table below. (The unit is factory-set to "00".)

Setting Description	Function Number	Setting Value
Standard	30	00
Lower control		01

Setting the Heater Room Temperature Correction

- Depending on the installed environment, the room temperature sensor may require a correction. The settings may be changed as shown in the table below. (The unit is factory-set to "00".)

Setting Description	Function Number	Setting Value
Standard	31	00
Lower control		01
Slightly warmer control		02
Warmer control		03

Setting Other Functions

- The following settings are also possible, depending on the operating conditions. (The unit is factory-set to "00".)

Setting Description	Function Number	Setting Value
Yes	40	00
No		01

Indoor Room Temperature Sensor Switching Function (Wired remote controller only)

Setting Description	Function Number	Setting Value
No	42	00
Yes		01

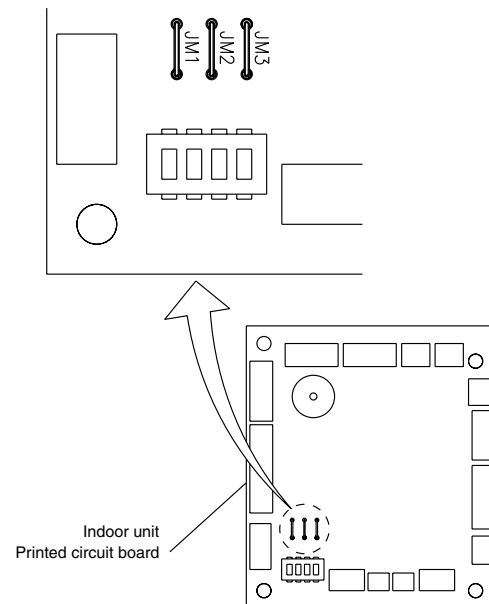
- If setting value is "00", room temperature is controlled by the indoor unit temperature sensor.
- If setting value is "01", room temperature is controlled by either indoor unit temperature sensor or remote control unit sensor.

[When using the wireless remote controller]

SWITCHING REMOTE CONTROL UNIT SIGNAL CODES

- Confirm the setting of the remote control unit signal code and the printed circuit board setting.
- If these are not confirmed, the remote control unit cannot be used to operate for the air conditioner.

Jumper wire		Remote control unit signal code
JM1	JM2	
Connect	Connect	A (Primary setting)
Disconnect	Connect	b
Connect	Disconnect	c
Disconnect	Disconnect	d



Setting record

- Record any changes to the settings in the following table.

Setting	Setting Value
Ceiling height	
Filter sign	
Cooler room temperature correction	
Heater room temperature correction	
Auto restart	
Indoor room temperature sensor switching function	

After completing the FUNCTION SETTING, be sure to turn off the power and turn it on again.

- If setting value is "00", room temperature is controlled by the indoor unit temperature sensor.
- If setting value is "01", room temperature is controlled by either indoor unit temperature sensor or remote control unit sensor.

TEST RUN

CHECK ITEMS

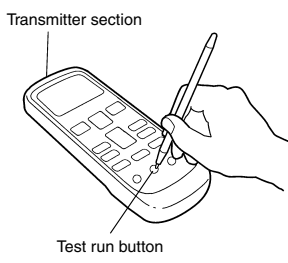
- Is operation of each button on the remote control unit normal?
- Does each lamp light normally?
- Do not air flow direction louvers operate normally?
- Is the drain normal?
- Is there any abnormal noise and vibration during operation?

- Do not operate the air conditioner in the running state for a long time.

- Test running
  - When the air conditioner is run by pressing the remote control unit test run button, the OPERATION and TIMER lamps flash slowly at the same time.

[Using the wireless remote control]

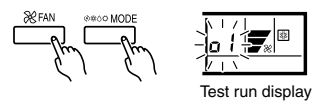
- For the operation method, refer to the operating manual.
- The outdoor unit may not operate depending on the room temperature. In this case, press the test run button on the remote control unit while the air conditioner is running. (Point the transmitter section of the remote control unit toward the air conditioner and press the test run button with the tip of a ball-point pen, etc.)



- To end test operation, press the remote control unit START/STOP button. (When the air conditioner is run by pressing the test run button, the OPERATION indicator lamp and TIMER indicator lamp will simultaneously flash slowly.)

[Using the wired remote control]

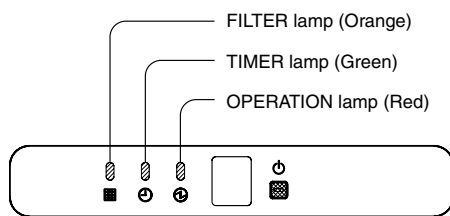
- For the operation method, refer to the operating manual.
- Stop the air conditioner operation.
- Press the master control button and the fan control button simultaneously for 2 seconds or more to start the test run.



- Press the start/stop button to stop the test run.

Troubleshooting

(Troubleshooting with the indoor display)  
Troubleshooting at the display is possible either on the wired or wireless remote control.



The OPERATION, TIMER and FILTER lamp operate as follows table according to the error contents.

Error contents	OPERATION lamp (RED)	TIMER lamp (GREEN)	FILTER lamp (ORANGE)
Indoor signal error	X	O	X
Wired remote controller abnormal	X	(8 times)	X
Indoor room temperature sensor error	(2 times)	(2 times)	X
Indoor heat exchanger temperature sensor (middle) error	(2 times)	(3 times)	X
Indoor heat exchanger temperature sensor (inlet) error	(2 times)	(4 times)	X
Float switch operated	(2 times)	(6 times)	X
Outdoor discharge pipe temperature sensor error	(3 times)	(2 times)	X
Outdoor heat exchanger temperature sensor (outlet) error	(3 times)	(3 times)	X
Outdoor temperature sensor error	(3 times)	(4 times)	X
Heatsink thermistor error	(3 times)	(7 times)	X
Compressor temperature sensor error	(3 times)	(8 times)	X
2-way valve temperature sensor error	(3 times)	X	(2 times)
3-way valve temperature sensor error	(3 times)	X	(3 times)
Outdoor heat exchanger temperature sensor (middle) error	(3 times)	X	(4 times)
Indoor manual auto switch abnormal	(4 times)	(2 times)	X
Power supply frequency detection error	(4 times)	(4 times)	X
IPM protection	(5 times)	(2 times)	X
CT error	(5 times)	(3 times)	X
Compressor location error	(5 times)	(5 times)	X
Outdoor fan error	(5 times)	(8 times)	X
Connected indoor unit abnormal	(5 times)	(7 times)	X
Outdoor unit computer communication error	(5 times)	(8 times)	X
Indoor fan abnormal	(6 times)	(2 x 3 times)	X
Discharge temperature error	(7 times)	(2 times)	X
Excessive high pressure protection on cooling	(7 times)	(3 times)	X
4-way valve abnormal	(7 times)	(4 times)	X
Pressure switch abnormal	(7 times)	(5 times)	X
Compressor temperature error	(7 times)	(6 times)	X
Active filter abnormal	(8 times)	(2 x 3 times)	X
PFC circuit error	(8 times)	(4 times)	X

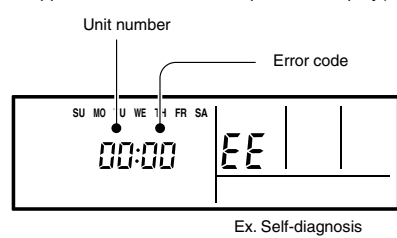
O: 0.5s ON/0.5s OFF (Flash) X: OFF

[Troubleshooting at the remote control LCD]

This is possible only on the wired remote control.

[SELF-DIAGNOSIS]

If an error occurs, the following display will be shown. ("EE" will appear in the set room temperature display.)

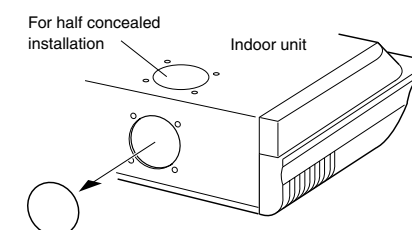


Error code	Error contents
01	
13	Indoor signal error
26	
27	
00	Wired remote controller abnormal
02	Indoor room temperature sensor error
04	Indoor heat exchanger temperature sensor (middle) error
08	Indoor heat exchanger temperature sensor (inlet) error
09	Float switch operated
0C	Outdoor discharge pipe temperature sensor error
06	Outdoor heat exchanger temperature sensor (outlet) error
0A	Outdoor temperature sensor error
0E	Heatsink thermistor error
15	Compressor temperature sensor error
1d	2-way valve temperature sensor error
1E	3-way valve temperature sensor error
29	Outdoor heat exchanger temperature sensor (middle) error
20	Indoor manual auto switch abnormal
2A	Power supply frequency detection error
17	IPM protection
18	CT error
1A	Compressor location error
1b	Outdoor fan error
1F	Connected indoor unit abnormal
1c	Outdoor unit computer communication error
12	Indoor fan abnormal
0F	Discharge temperature error
24	Excessive high pressure protection on cooling
2c	4-way valve abnormal
16	Pressure switch abnormal
2b	Compressor temperature error
19	Active filter abnormal
25	PFC circuit error

If "CO" appears in the unit number display, there is a remote controller error. Refer to the installation instruction sheet included with the remote controller.

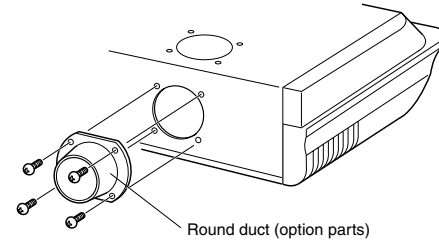
FRESH-AIR INTAKE

- Open up the knockout hole for the fresh-air intake, as shown in the figure. (If using half-concealed installation, open up the top knockout hole instead.)



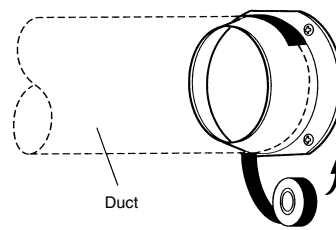
**CAUTION**  
When removing the cabinet (iron plate), be careful not to damage the indoor unit internal parts and surrounding area (outer case).  
When processing the cabinet (iron plate), be careful not to injure yourself with burrs, etc.

- Fasten the round flange (optional) to the fresh-air intake, as shown in the figure. (If using half-concealed installation, attach to the top.)



[After completing "INDOOR UNIT INSTALLATION" ...]

- Connect the duct to the round flange.
- Seal with a band and vinyl tape, etc. so that air does not leak from the connection.



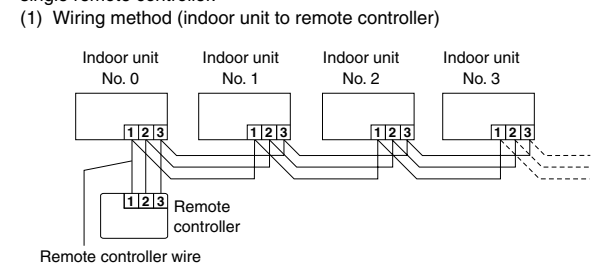
SPECIAL INSTALLATION METHODS

CAUTION

- When setting DIP switches, do not touch any other parts on the circuit board directly with your bare hands.
- Be sure to turn off the main power.

1. GROUP CONTROL SYSTEM

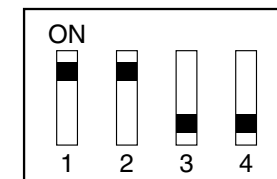
A number of indoor units can be operated at the same time using a single remote controller.



- DIP switch setting (indoor unit)  
Set the unit number of each indoor unit using DIP switch on the indoor unit circuit board. (See following table and figure.)  
DIP switch is normally set to make unit number No. 0.

Unit number	DIP SWITCH No.			
	1	2	3	4
0	OFF	OFF	OFF	OFF
1	ON	OFF	OFF	OFF
2	OFF	ON	OFF	OFF
3	ON	ON	OFF	OFF
4	OFF	OFF	ON	OFF
5	ON	OFF	ON	OFF
6	OFF	ON	ON	OFF
7	ON	ON	ON	OFF
8	OFF	OFF	OFF	ON
9	ON	OFF	OFF	ON
10	OFF	ON	OFF	ON
11	ON	ON	OFF	ON
12	OFF	OFF	ON	ON
13	ON	OFF	ON	ON
14	OFF	ON	ON	ON
15	ON	ON	ON	ON

Example : No. 3



CUSTOMER GUIDANCE

Explain the following to the customer in accordance with the operating manual:

- Starting and stopping method, operation switching, temperature adjustment, timer, air flow switching, and other remote control unit operations.
- Air filter removal and cleaning, and how to use the air louvers.
- Give the operating and installation manuals to the customer.
- If the signal code is changed, explain to the customer how it changed (the system returns to signal code A when the batteries in the remote control unit are replaced).

(\*4) is applicable to using wireless remote control.