

**INVERTER MULTI
AIR CONDITIONER
WALL MOUNTED type**

**SERVICE
MANUAL**



Models

Indoor unit

Outdoor unit

ASY18LMA-W
ASY12LMACW
ASY9LMACW
ASY7LMACW



AOY24LMAM2

CONTENTS

SPECIFICATIONS 1
OUTLINE AND DIMENSIONS 2
ERROR CONTENTS 4
REFRIGERANT SYSTEM DIAGRAM 6
CIRCUIT DIAGRAM 7
INDOOR PCB CIRCUIT DIAGRAM 8
DISASSEMBLY ILLUSTRATION 11
PARTS LIST 20
STANDARD ACCESSORIES 23

SPECIFICATIONS

TYPE	COOL & HEAT			
INDOOR UNIT	ASY18LMA-W	ASY12LMACW	ASY9LMACW	ASY7LMACW
OUTDOOR UNIT	AOY24LMAM2			

ELECTRICAL DATA (INDOOR UNIT)

COOLING CAPACITY	(kW)	5.2	3.5	2.7	2.2
HEATING CAPACITY	(kW)	6.0	4.0	3.2	2.6
MOISTURE REMOVAL	(ℓ /hr)	2.2	1.6	1.2	1.0
AIR CIRCULATION-Hi	(m³/hr)	950	530	480	430

ELECTRICAL DATA (OUTDOOR UNIT)

POWER SOURCE	(V)	230			
FREQUENCY	(Hz)	50			
COOLING CAPACITY	(MAX) (kW)	5.8 (7.8)			
HEATING CAPACITY	(MAX) (kW)	6.4 (9.0)			
RUNNING CURRENT	(A) (MAX)	COOLING	7.6 (12.2)		
		HEATING	7.2 (12.2)		
INPUT WATTS	(kW) (MAX)	COOLING	1.73 (2.77)		
		HEATING	1.64 (2.77)		
E.E.R.	(kW / kW)	COOLING	3.35		
		HEATING	3.90		

COMPRESSOR

TYPE	Hermetic type, Inverter, 4 poles, Three phase, DC motor, Rotary			
DISCRIMINATION	TNB 220 FPCM			
REFRIGERANT	R410A	(g)	1,900	

FAN MOTOR

POWER SOURCE	(V)	230 - 240			
INDOOR UNIT	DISCRIMINATION	MFA-30HTT	MFA-40GR	MFA-40GR	MFA-40GR
	HI	(r.p.m.) 1,160 - 1,180	1,310 - 1,310	1,200 - 1,200	1,000 - 1,000
	MED	(r.p.m.) 1,000 - 1,020	1,260 - 1,260	1,100 - 1,100	900 - 900
	LO	(r.p.m.) 850 - 870	1,190 - 1,190	1,000 - 1,000	850 - 850
	QUIET	(r.p.m.) 800 - 820	1,100 - 1,100	940 - 940	800 - 800
OUTDOOR UNIT	(r.p.m.)	780 - 790			

DIMENSIONS

INDOOR UNIT	H x W x D	(mm)	320 x 1,120 x 220	257 x 808 x 187
OUTDOOR UNIT	H x W x D	(mm)	650 x 830 x 320	

WEIGHT

INDOOR UNIT	GROSS / NET	(kg)	22 / 16	10 / 8
OUTDOOR UNIT	GROSS / NET	(kg)	62 / 56	

NOISE LEVEL

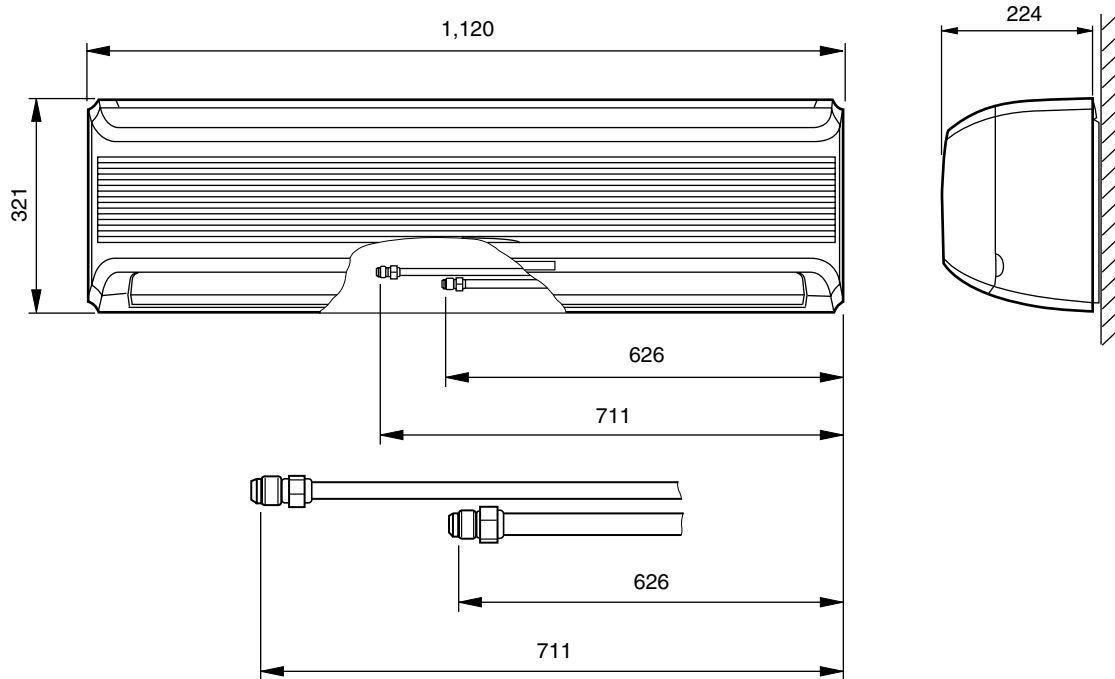
INDOOR UNIT	HI	(dB)	43	38	36	34
	LO	(dB)	32	33	29	29
OUTDOOR UNIT	COOLING	(dB)	49			
	HEATING	(dB)	50			

OUTLINE AND DIMENSIONS

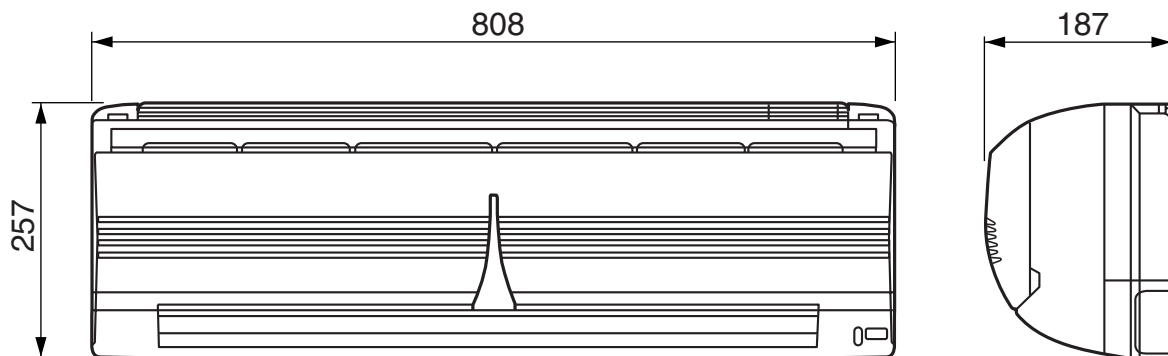
INDOOR UNIT

Unit : mm

Model : ASY18LMA-W



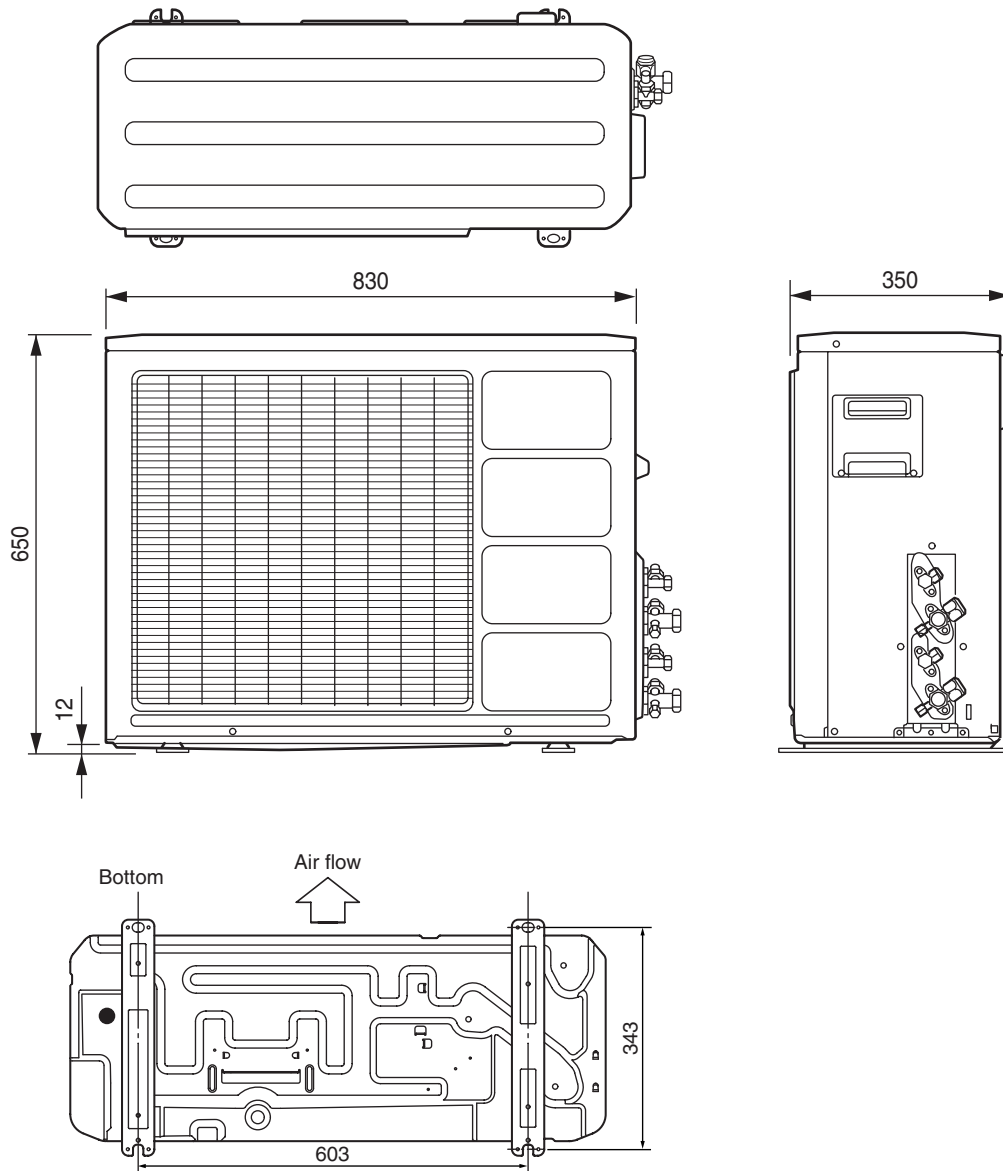
Models : ASY12LMACW
ASY9LMACW
ASY7LMACW



OUTDOOR UNIT

Unit : mm

Model : AOY24LMAM2



ERROR CONTENTS

INDOOR UNIT

○ : Fast flashing ● : Slow flashing

Operation lamp : Red lamp
Timer lamp : Green lamp

ASY18LMA-W

Error contents	Red lamp	Green lamp	Orange lamp
Heat exchanger thermistor error (outdoor unit)	○	● (3 times)	---
Outdoor temperature thermistor error (outdoor unit)	○	● (4 times)	---
Discharge thermistor error (outdoor unit)	○	● (5 times)	---
Compressor thermistor error (outdoor unit)	○	● (8 times)	---
Pressure switch error (outdoor unit)	○	● (9 times)	---
IPM error (inverter unit)	○	● (10 times)	---
Compressor loter location error (inverter unit)	○	● (13 times)	---
2 way valve thermistor error (outdoor unit)	○	○	● (2 times)
3 way valve thermistor error (outdoor unit)	○	○	● (3 times)
Capacity error of connecting indoor unit	○	---	● (4 times)
Serial reverse transmission error	○	---	● (5 times)
Thermistor error (room temp.) (indoor unit)	● (2 times)	○	(○)
Thermistor error (heat exchanger) (indoor unit)	● (3 times)	○	(○)
Serial order transmission error	● (5 times)	○	○
Fan motor error (indoor unit)	● (6 times)	○	---

ASY12LMACW, ASY9LMACW, ASY7LMACW

Large division indication			Small division indication		
Error contents	LED indication		Error contents	LED indication	
Thermistor error (indoor unit)	Red lamp Green lamp	● (2 times) ○	Thermistor error (room temp.)	Red lamp	○
			Thermistor error (heat exchanger)	Green lamp	● (2 times)
Control unit error (indoor unit)	Red lamp Green lamp	● (4 times) ○	MANUAL AUTO button error	Red lamp	○
			Power source Hz decision error	Green lamp	● (2 times)
Serial error	Red lamp Green lamp	● (5 times) ○	Serial reverse transmission error	Red lamp	○
			Serial order transmission error	Green lamp	● (2 times)
Fan motor error (indoor unit)	Red lamp Green lamp	● (6 times) ○	Lock error	Red lamp	○
			r.p.m error	Green lamp	● (2 times)
Thermistor error (outdoor unit)	Red lamp Green lamp	○ ● (2 times)	Discharge thermistor error	Red lamp	○
			Heat exchanger thermistor error	Green lamp	● (2 times)
			Outdoor temperature thermistor error	Red lamp	● (4 times)
			Compressor thermistor error	Green lamp	○
			2 way valve thermistor error	Red lamp	● (6 times)
			3 way valve thermistor error	Green lamp	○
Pressure switch error	Red lamp Green lamp	○ ● (3 times)	Pressure switch error	Red lamp	● (8 times)
			Capacity error of connecting indoor unit	Green lamp	○
Control unit error (outdoor unit)	Red lamp Green lamp	○ ● (4 times)	Outdoor unit IPM error	Red lamp	● (2 times)
			Compressor loter location error	Green lamp	○
Inverter error	Red lamp Green lamp	○ ● (5 times)	Compressor loter location error	Red lamp	● (9 times)
				Green lamp	○

When an error occurs, "Large division indication" is indicated first.

Secondly, "Small division indication" is indicated by pushing "Test run" button of remote controller.

Thermistor resistance values <Indoor unit side>

1) Room temperature thermistor (TH_{IA})

Room temperature (°C)	0	2.5	5	7.5	10	12.5	15	17.5	20	22.5	25	27.5	30
Resistance value (kΩ)	33.6	29.5	25.9	22.8	20.2	17.9	15.8	14.1	12.5	11.2	10.0	9.0	8.0

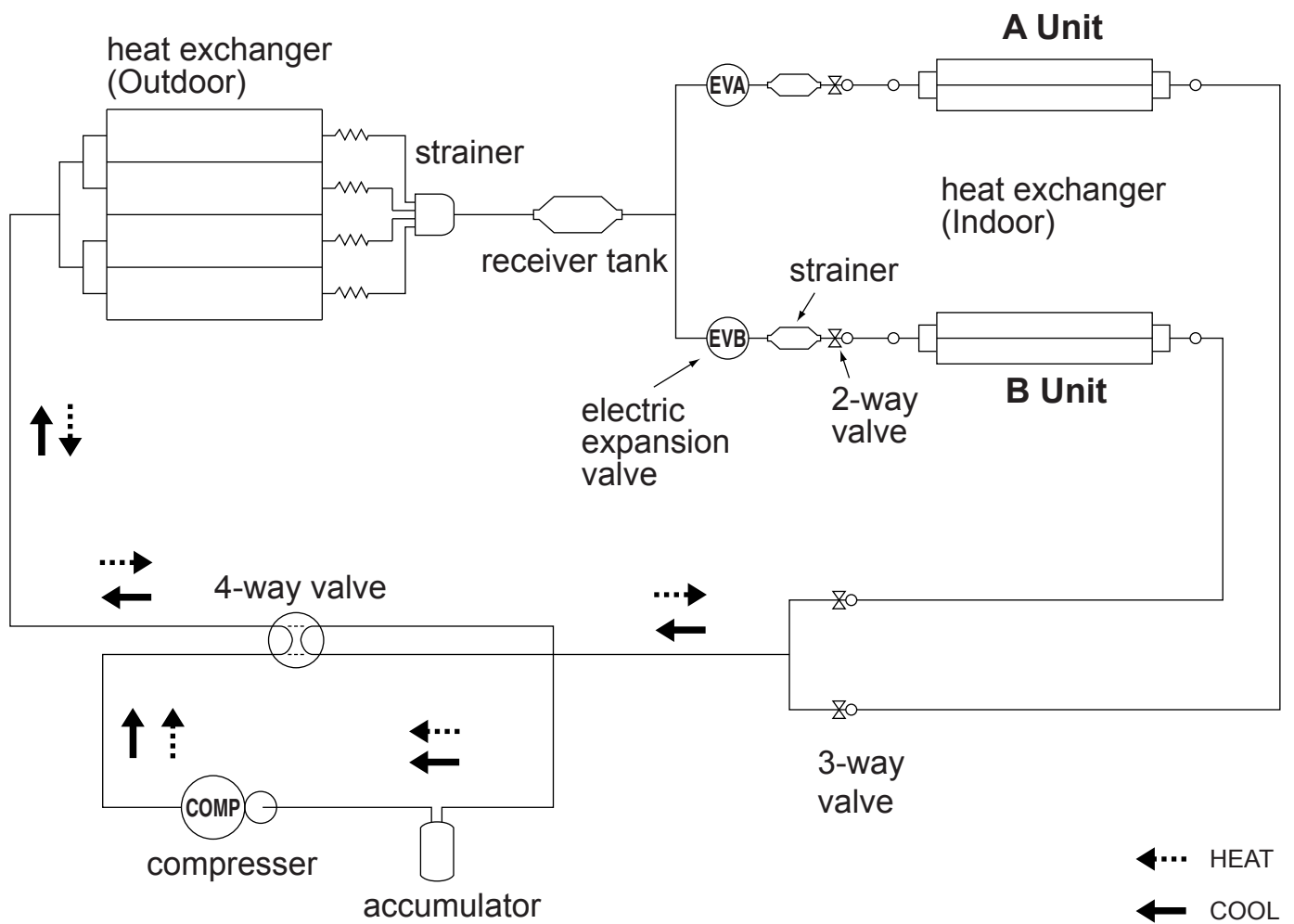
Room temperature (°C)	32.5	35	37.5	40	42.5	45	47.5	50
Resistance value (kΩ)	7.2	6.5	5.9	5.3	4.8	4.3	3.9	3.6

2) Indoor heat exchanger temperature thermistor (TH_{HM}, TH_{HI})

Heat exchanger temperature (°C)	0	2.5	5	7.5	10	12.5	15	17.5	20	22.5	25	27.5	30
Resistance value (kΩ)	176.0	153.5	134.2	117.6	103.3	91.0	80.3	71.0	62.9	55.9	49.7	44.3	39.6

Heat exchanger temperature (°C)	32.5	35	37.5	40	42.5	45	47.5	50	52.5	55	57.5	60
Resistance value (kΩ)	35.4	31.7	28.5	25.6	23.1	20.8	18.8	17.1	15.5	14.1	12.8	11.6

REFRIGERANT SYSTEM DIAGRAM

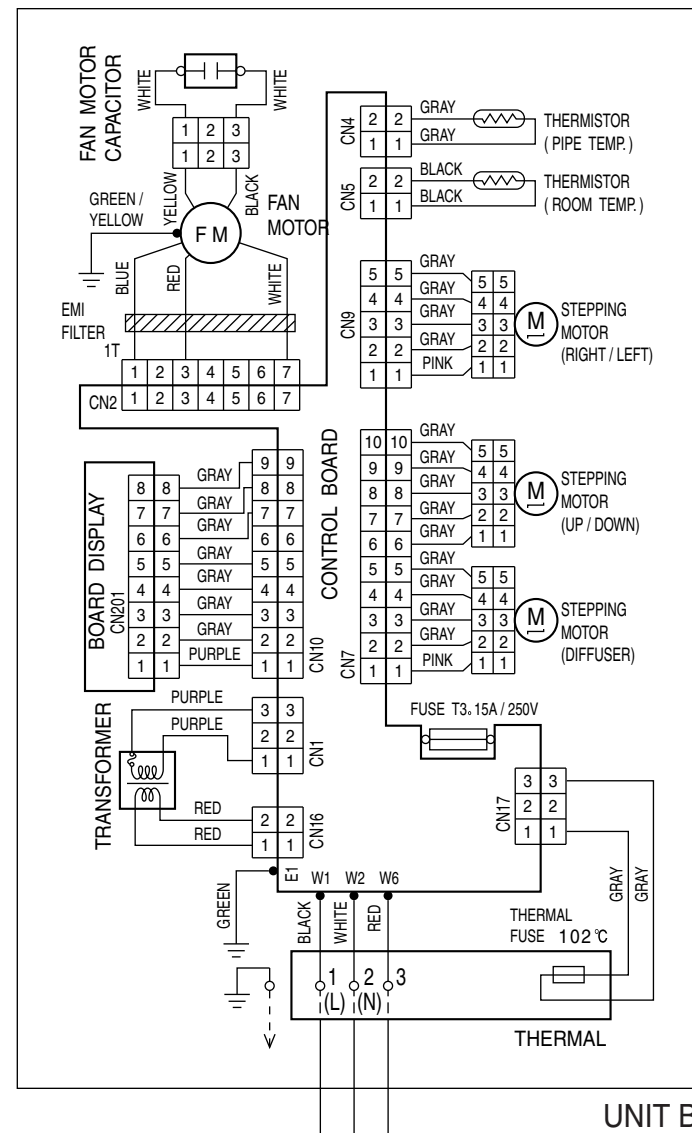


CIRCUIT DIAGRAM

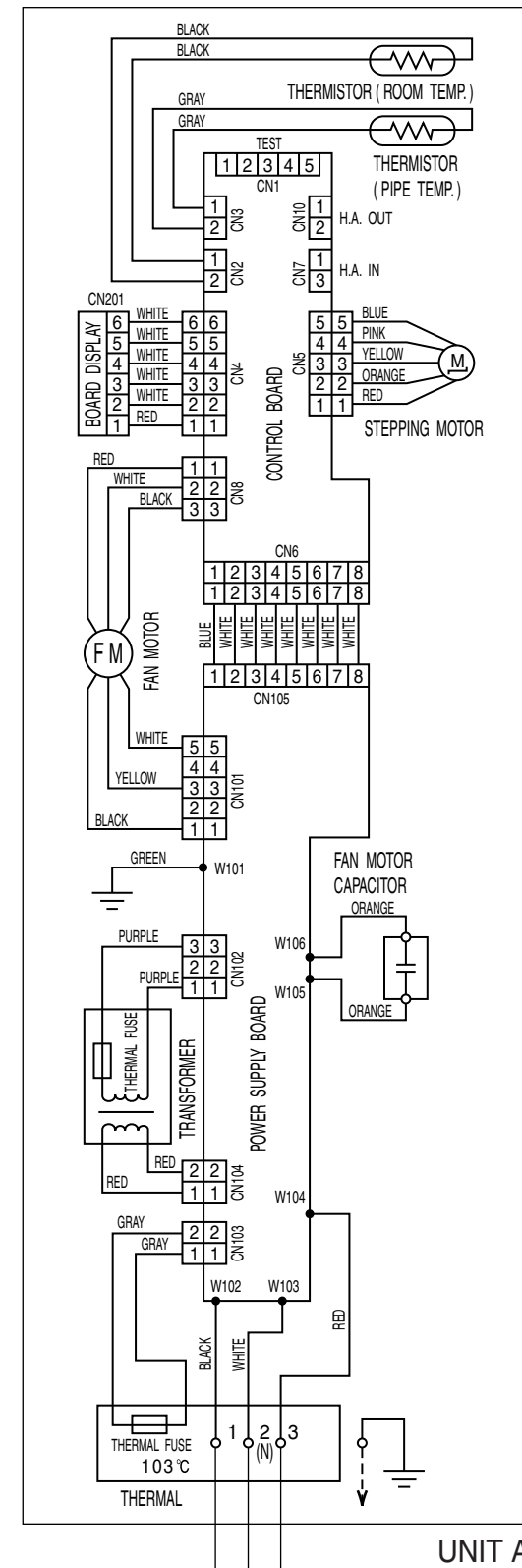
INDOOR UNIT

* ASY18LMA-W can't be connected to "UNIT A".

Model : ASY18LMA-W

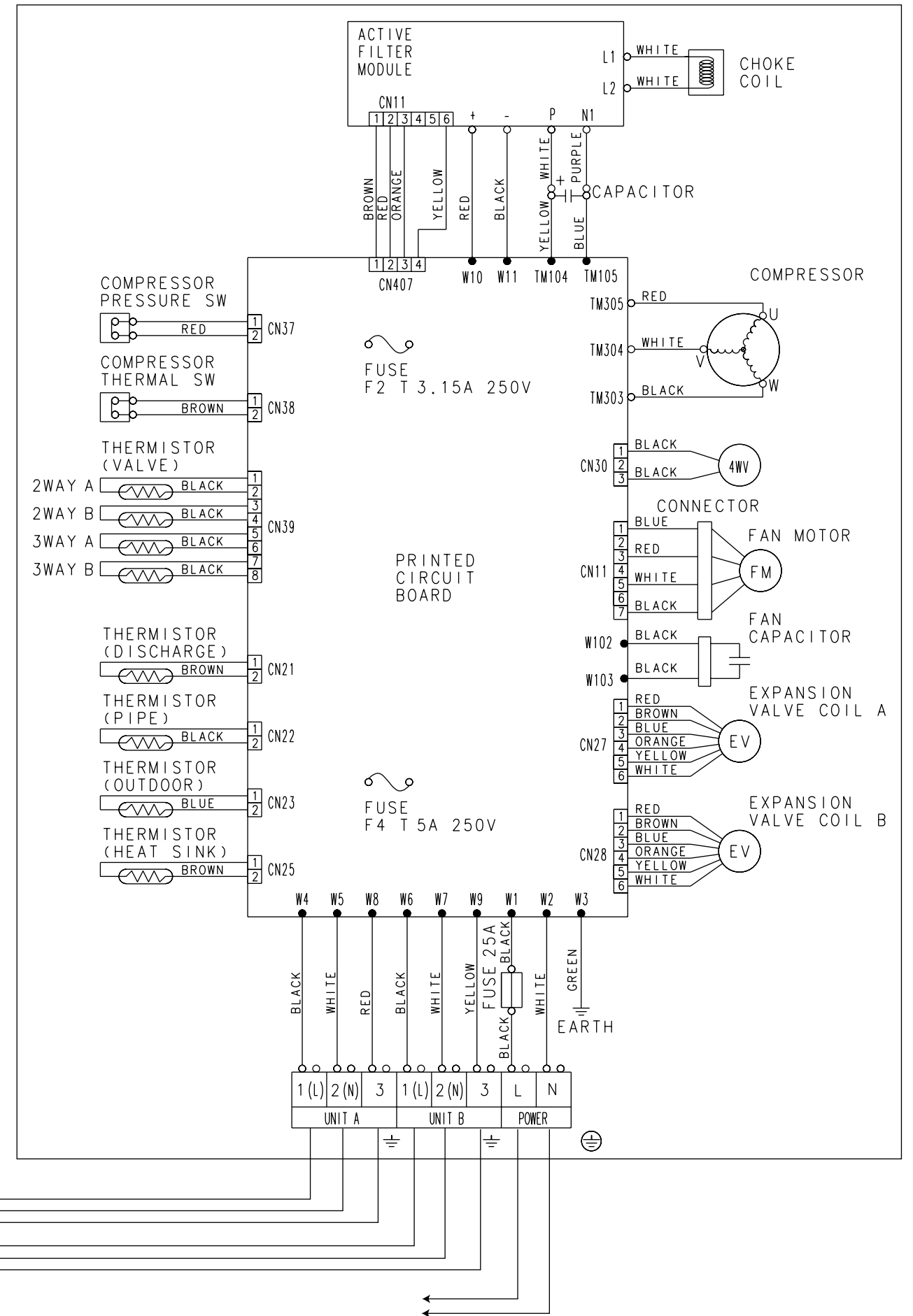


Models : ASY7LMACW ASY9LMACW ASY12LMACW



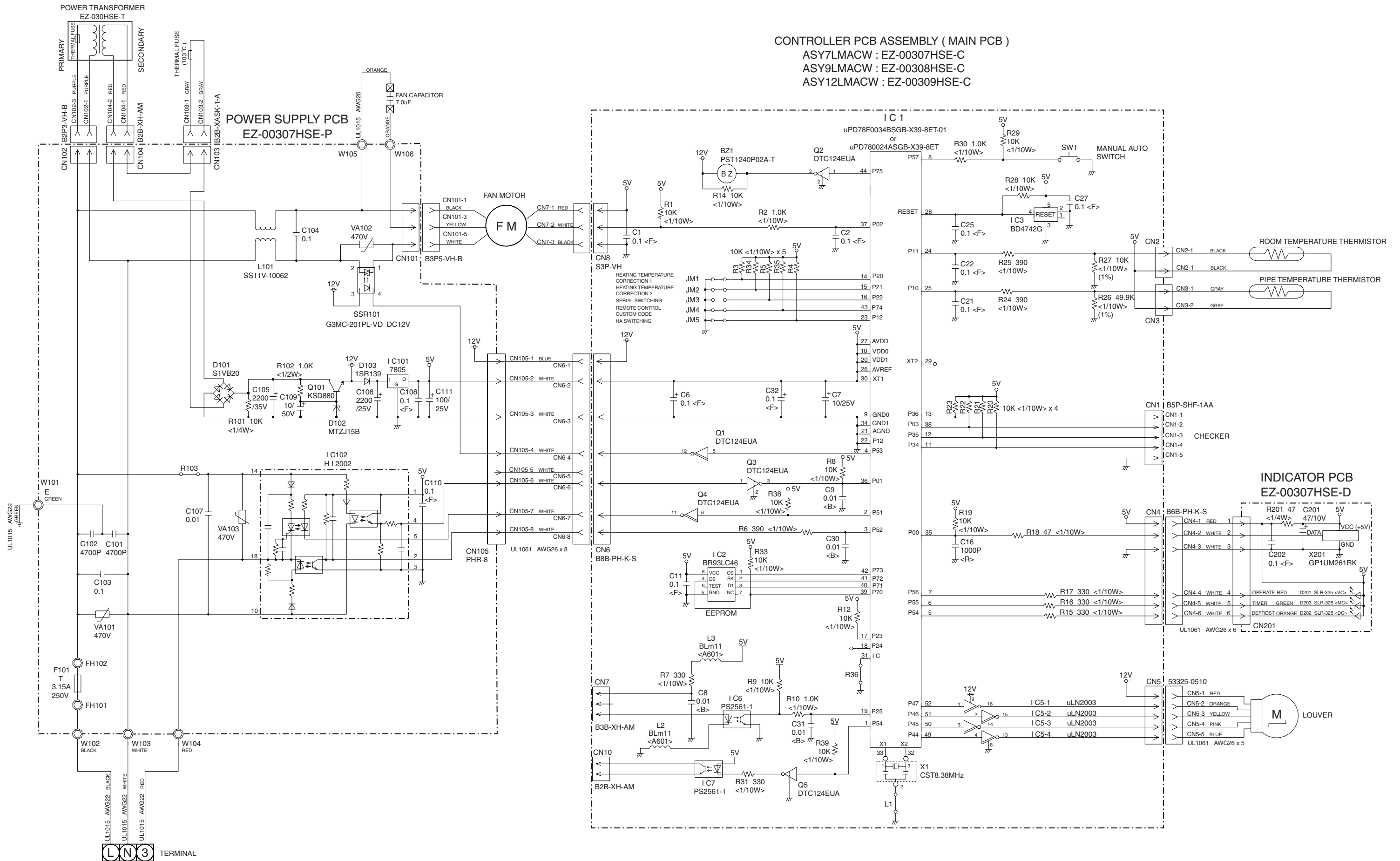
OUTDOOR UNIT

Model : AOY24LMAM2



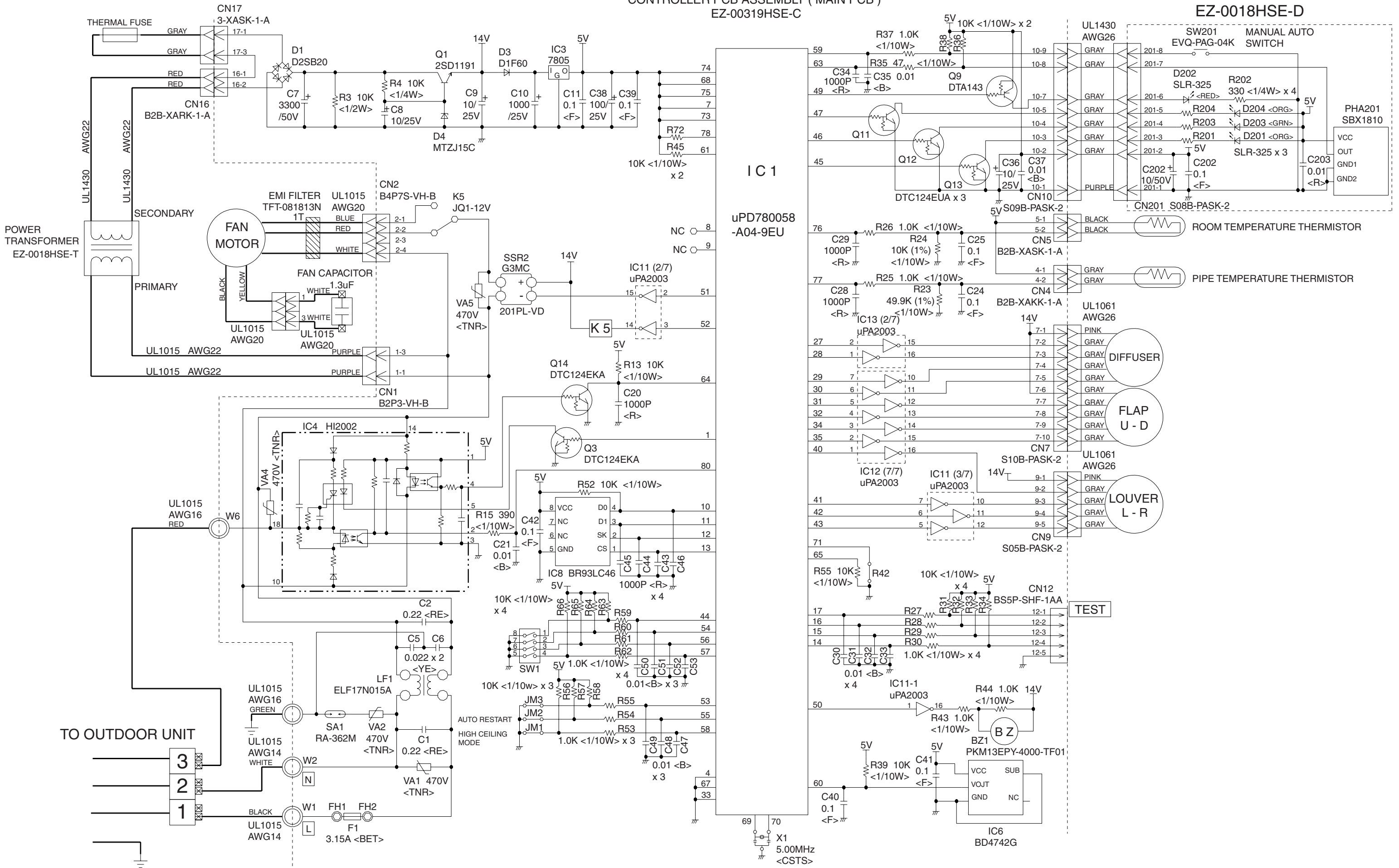
INDOOR PCB CIRCUIT DIAGRAM

Models : ASY7LMACW
 ASY9LMACW
 ASY12LMACW



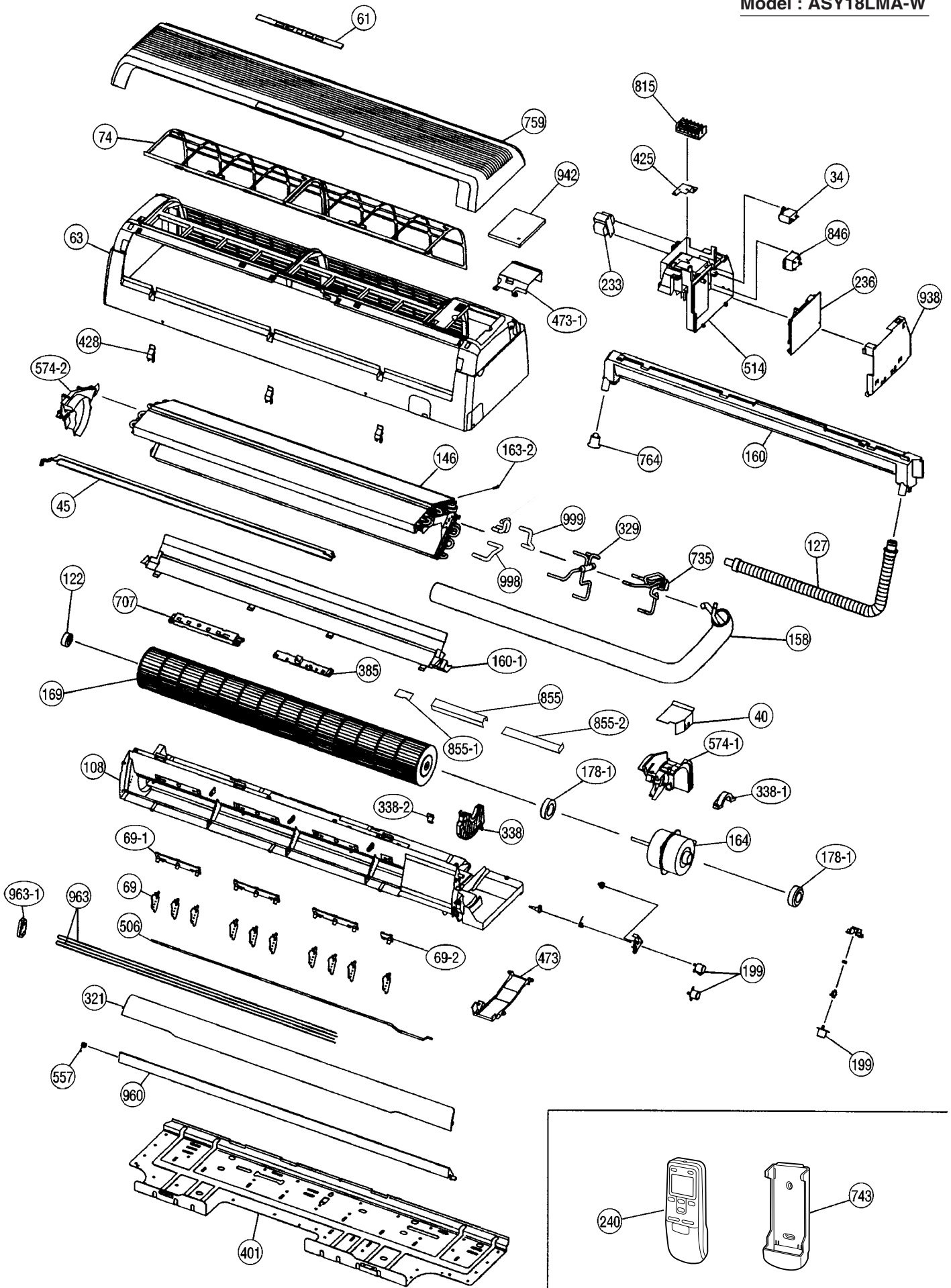
CONTROLLER PCB ASSEMBLY (MAIN PCB)
EZ-00319HSE-C

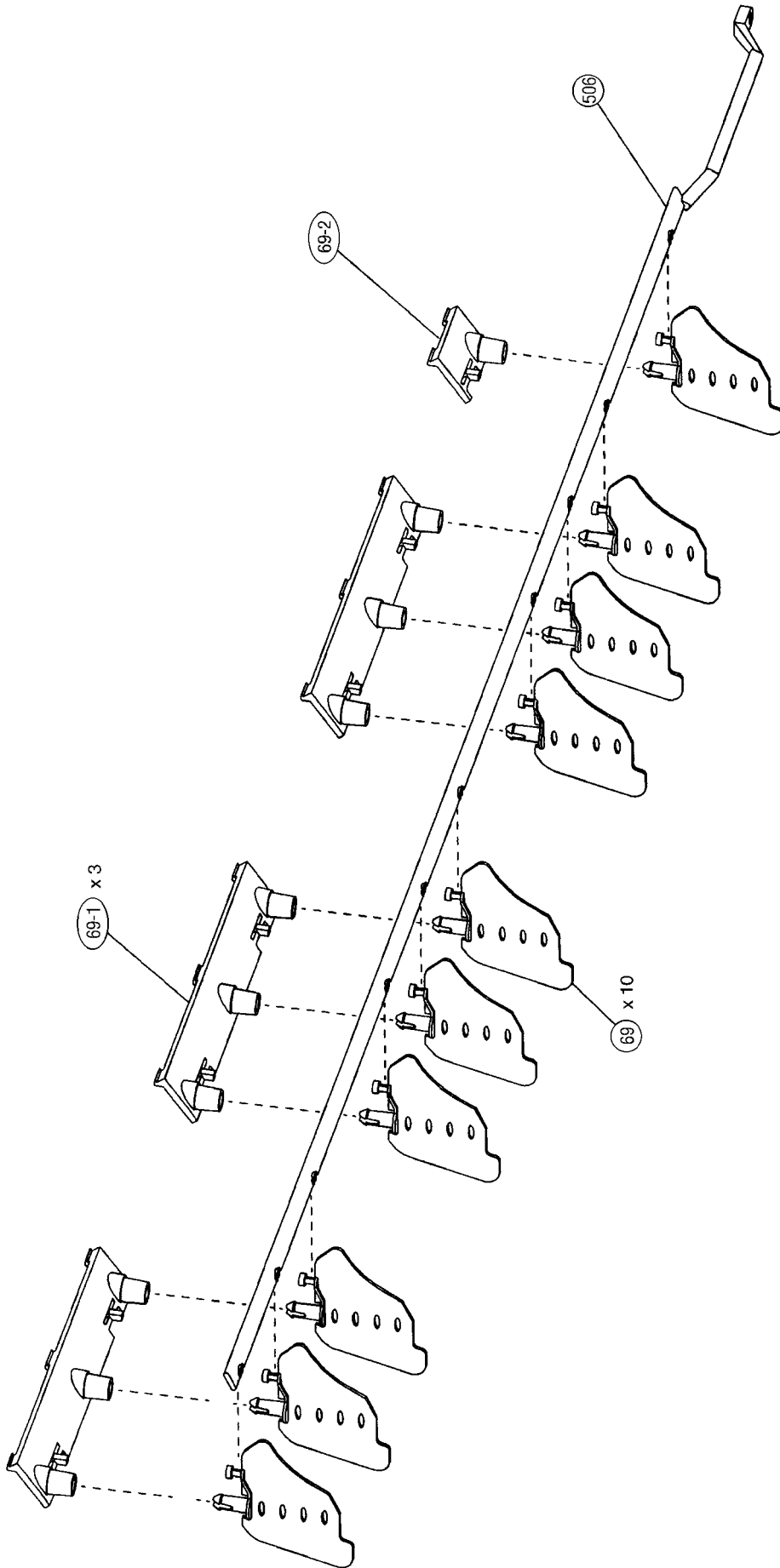
INDICATOR PCB
EZ-0018HSE-D

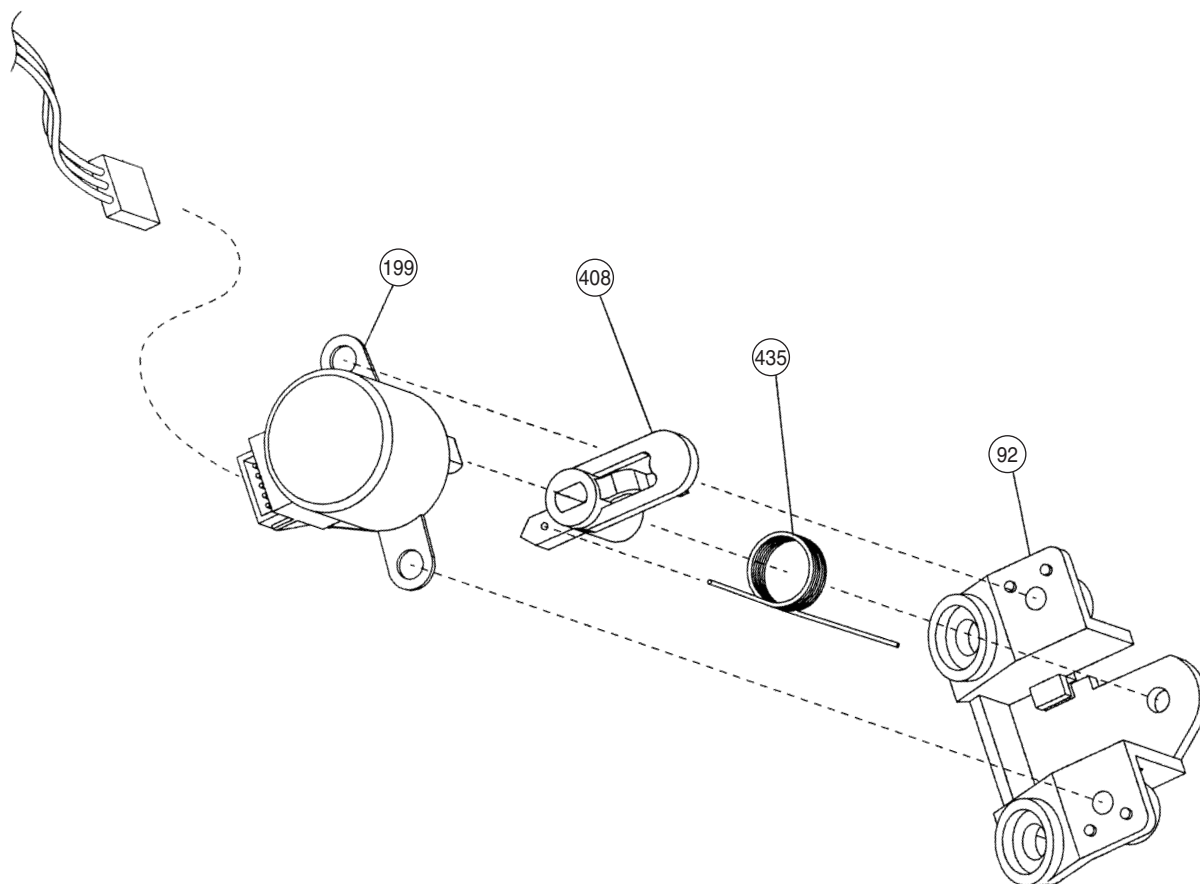
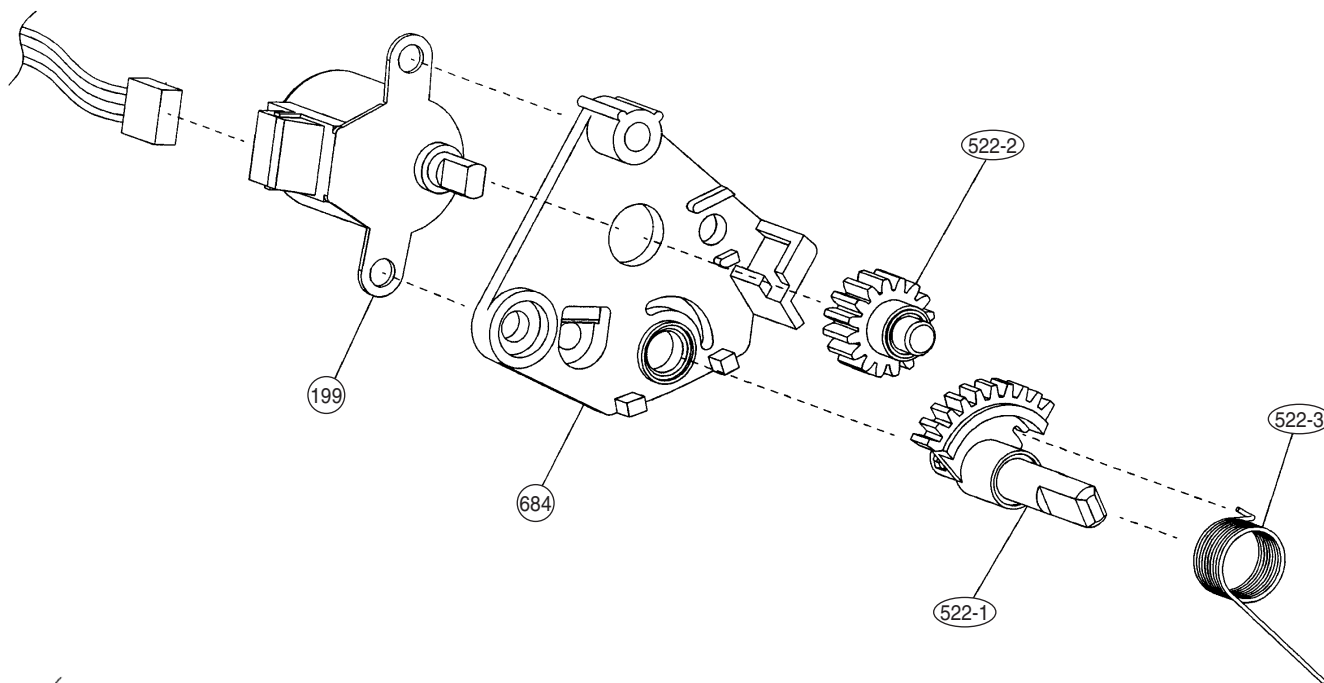


DISASSEMBLY ILLUSTRATION

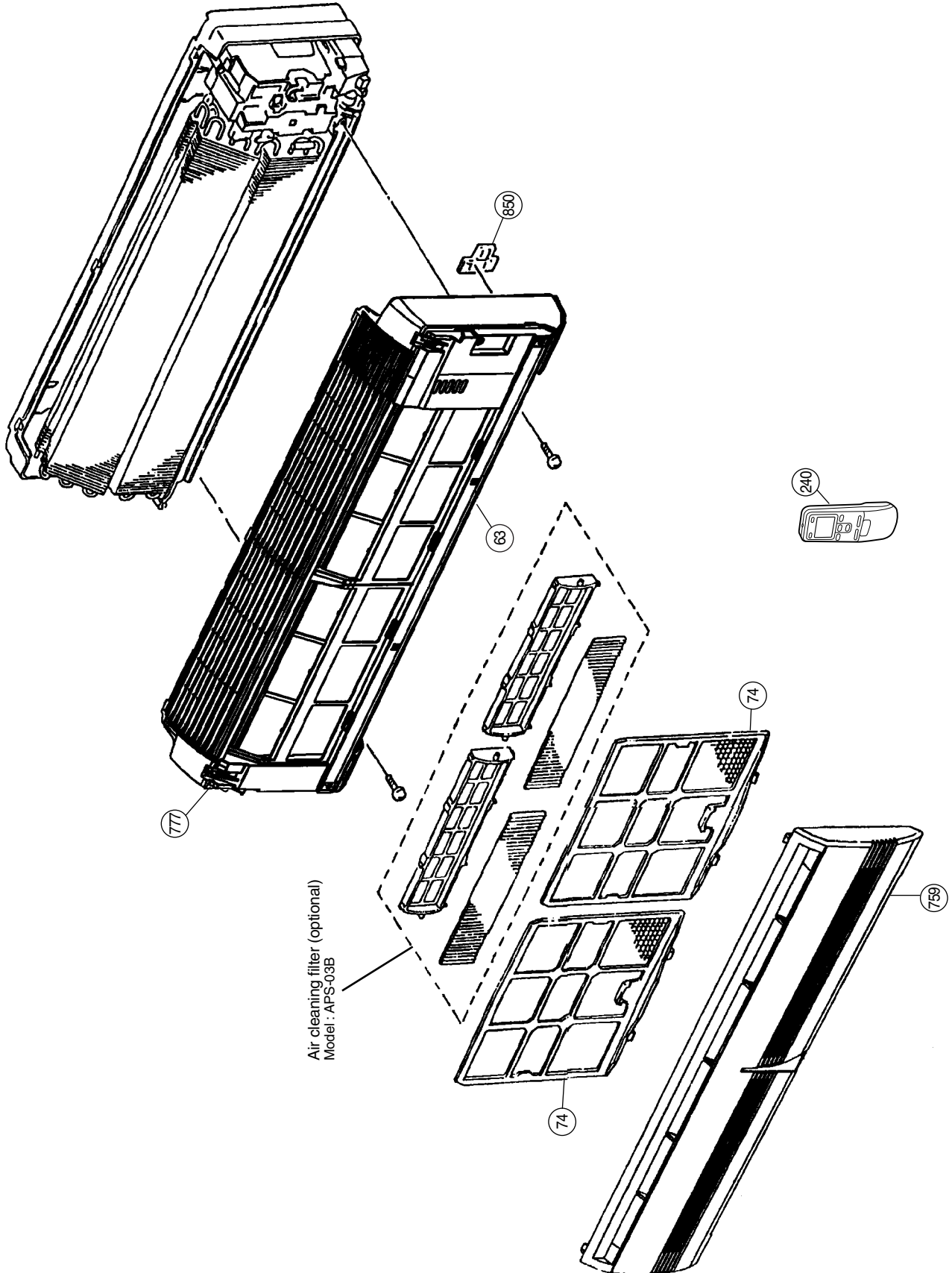
Model : ASY18LMA-W



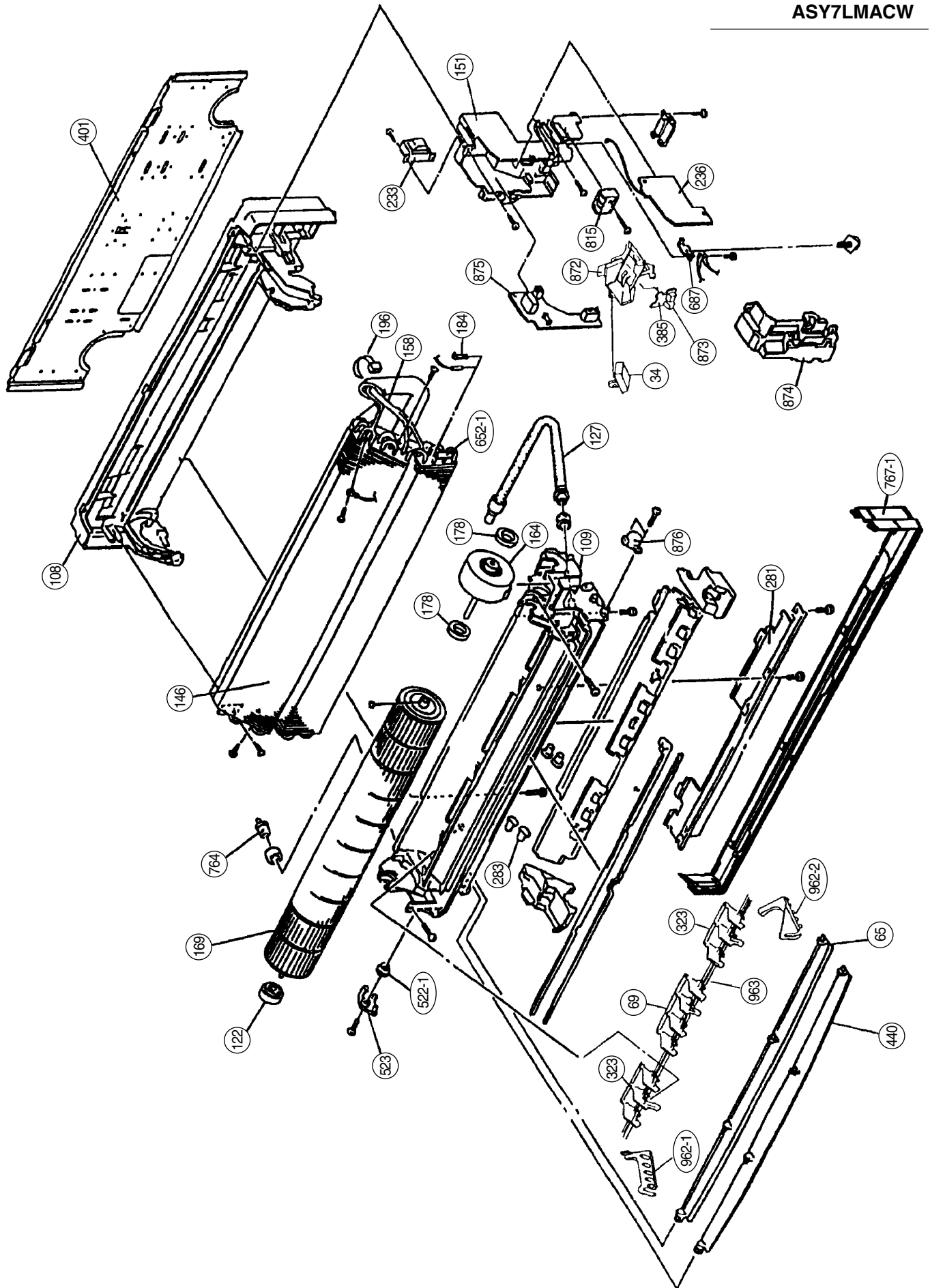


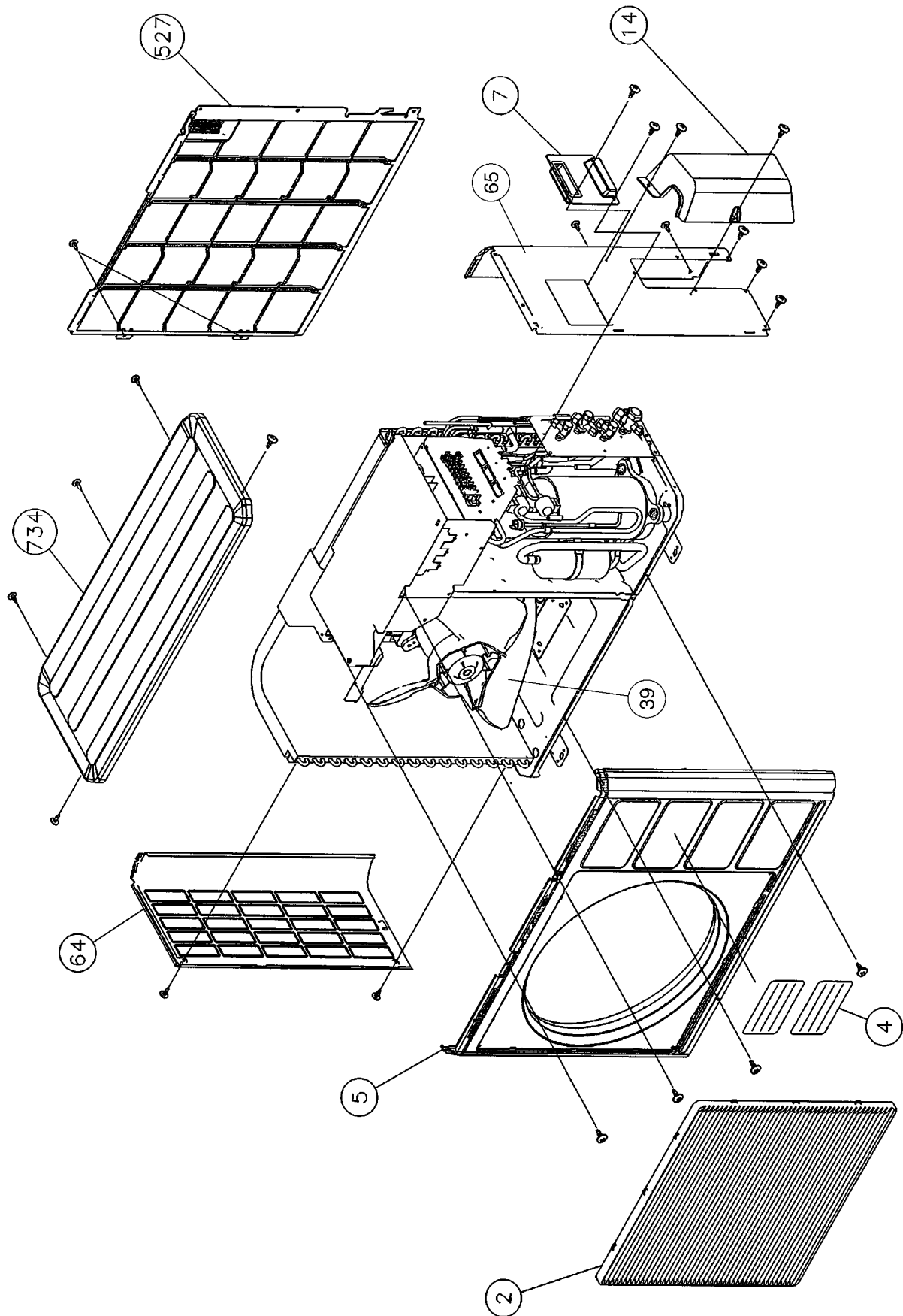


Models : ASY12LMACW
ASY9LMACW
ASY7LMACW

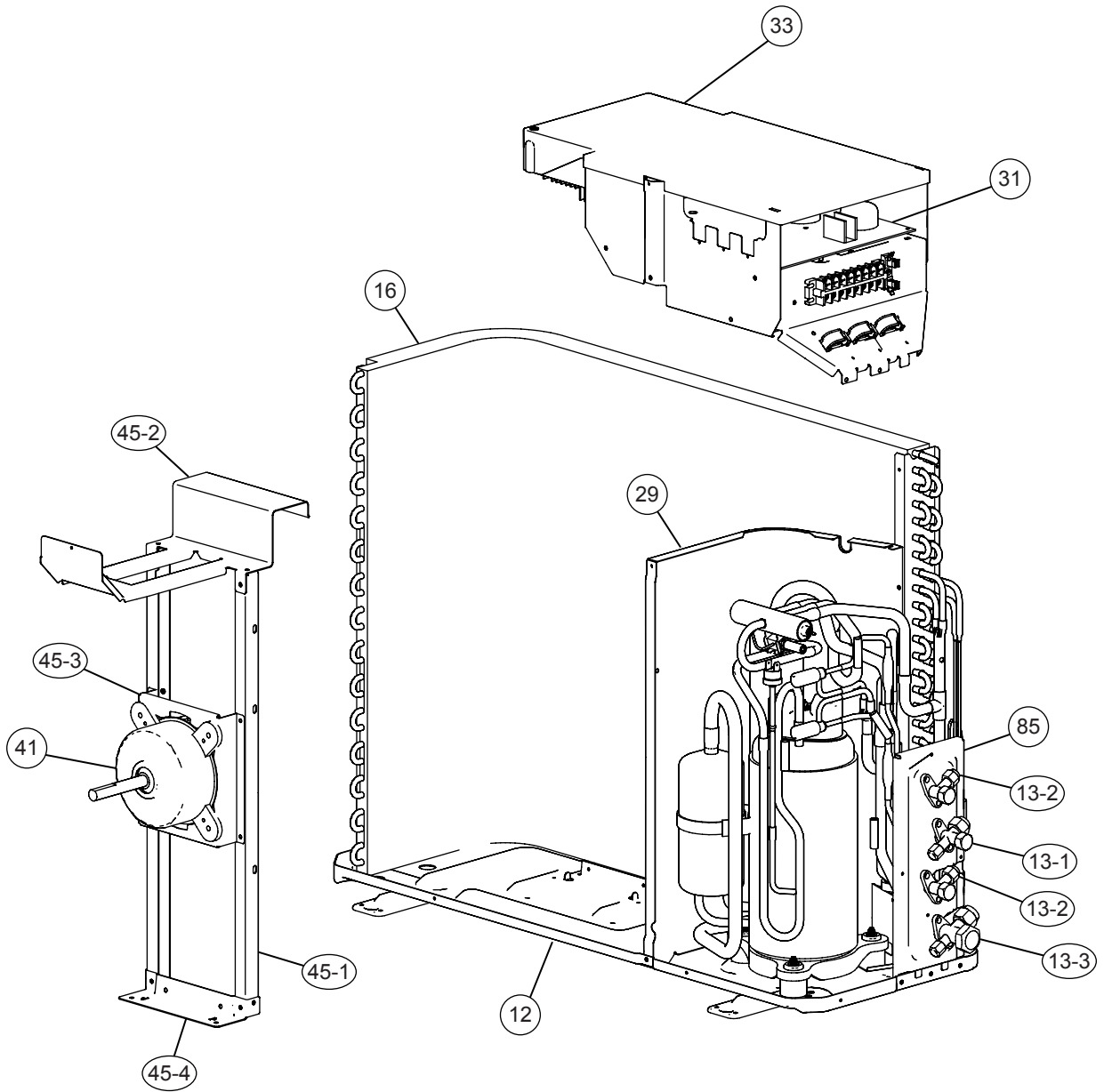


Models : ASY12LMACW
ASY9LMACW
ASY7LMACW

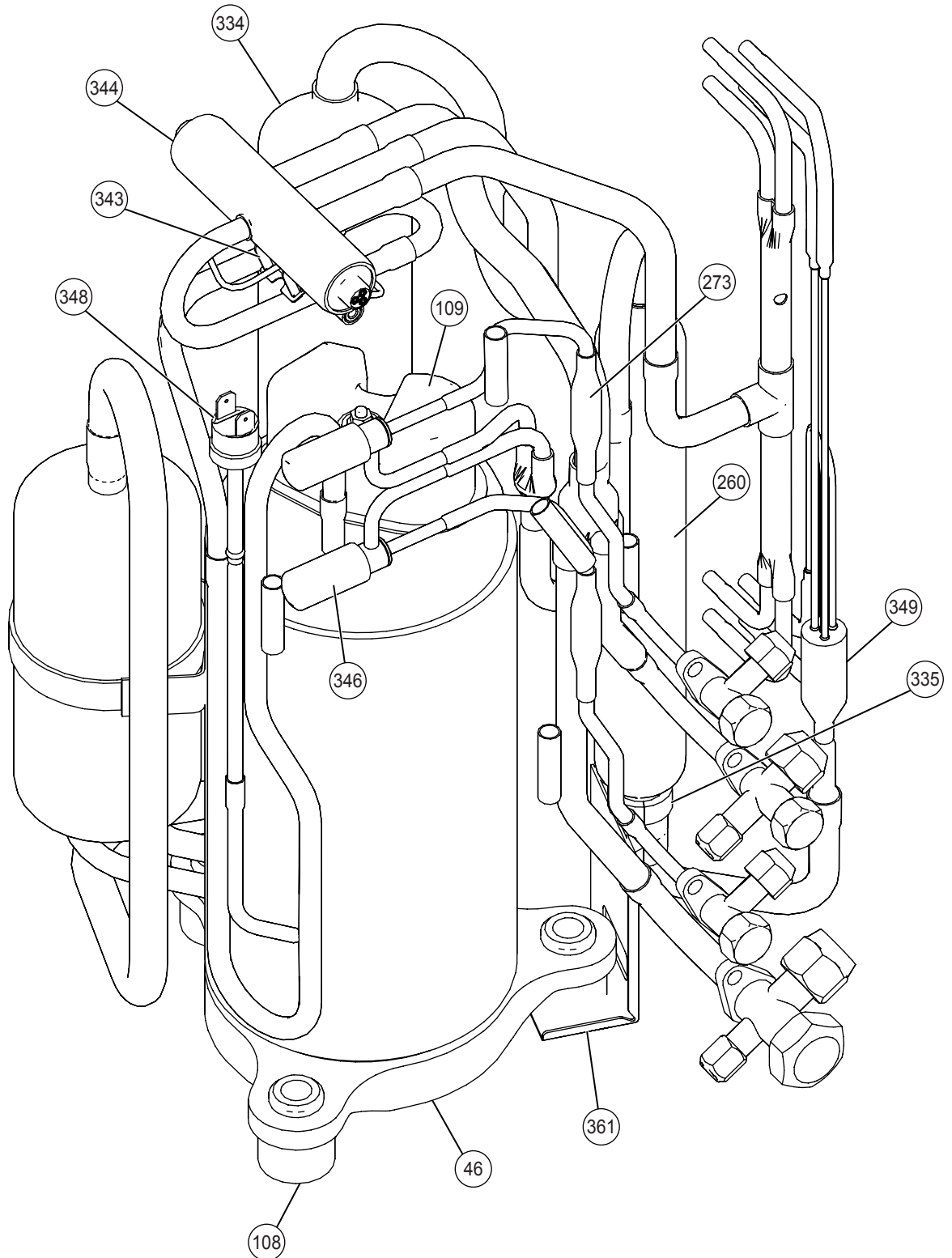




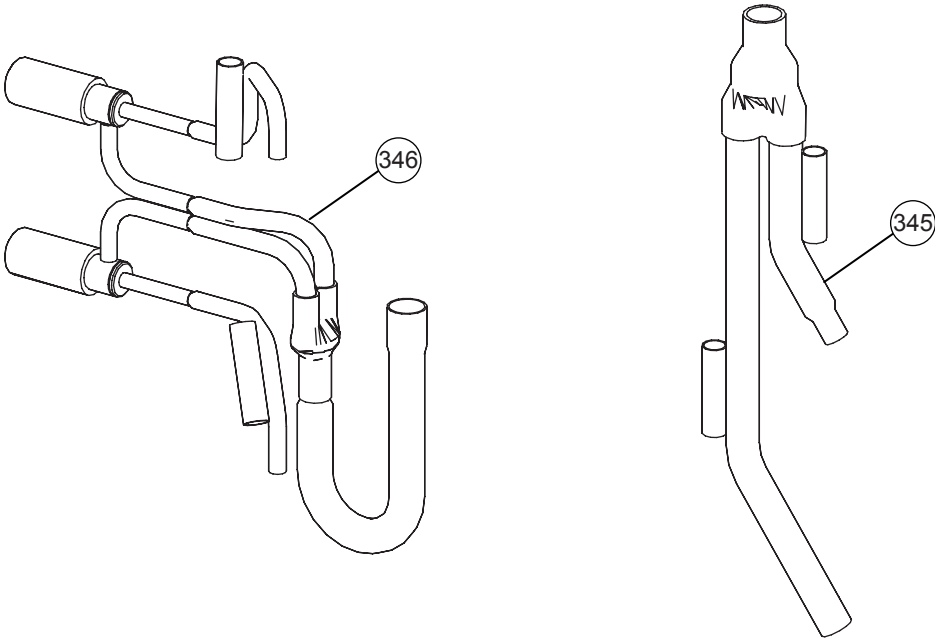
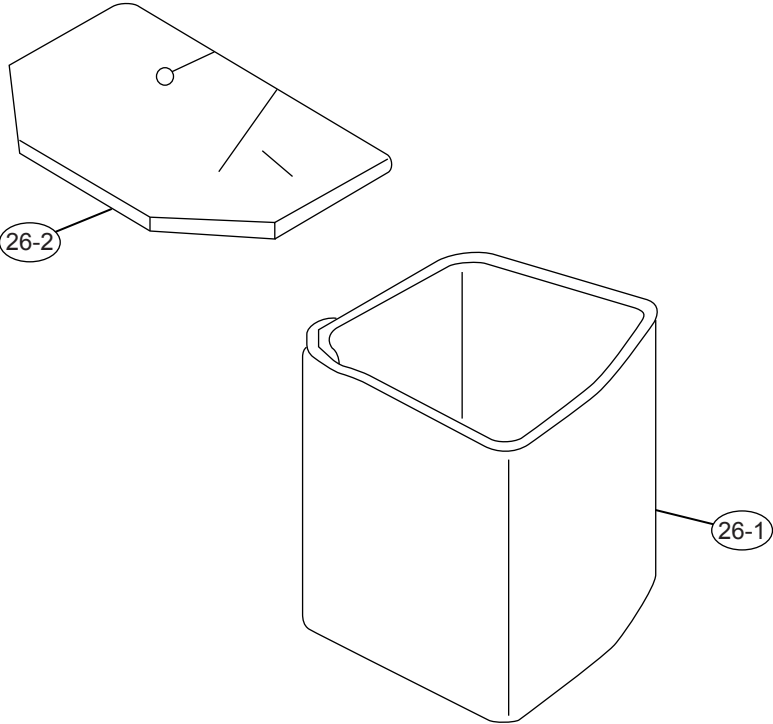
Model : AOY24LMAM2



Model : AOY24LMAM2



Model : AOY24LMAM2



PARTS LIST

When you order parts, please make a photocopy of this page and fill the number of the parts in the "Order" column.

INDOOR UNIT

Ref. No.	Description	Part No.	Ord.	Ref. No.	Description	Part No.	Ord.
		ASY18LMA-W	Q'ty			ASY18LMA-W	Q'ty
34	Capacitor (Fan Motor)	9704305060		408	Louver Link	9368562007	
40	Water Seal Plate	9369684005		425	Earth Plate	9368580001	
45	Bracket (Evaporator)	9369372001		428	Screw Cover	9368576011	
61	Decoration Plate	9367731015		435	Louver Spring	9368613006	
63	Front Panel	9368540012		473	Pipe Holder	9368565008	
69	Louver	9368560010		473-1	Cord Holder	9368566005	
69-1	Louver Base-A	9368558017		506	Louver Rod	9368561017	
69-2	Louver Base-B	9368559014		514	Control Box	9368543006	
74	Air Filter	9368552008		522-1	Sector Gear	9368556006	
92	Link Holder	9368563004		522-2	Pinion Gear	9368557003	
108	Base Assy	9369209017		522-3	Flap Spring	9368612009	
122	Bearing Assy	9368574000		557	Diffuser Spring	9368587000	
127	Drain Hose	9367695003		574-1	Evaporator Support-R	9368549008	
146	Evaporator Assy	9372102015		574-2	Evaporator Support-L	9368548001	
158	Joint Pipe Assy	9372461013		684	Motor Base	9368555009	
160	Front Drain Pan (kit)	9370932010		707	Display Cover	9368564001	
160-1	Rear Drain Pan Assy	9369201011		735	Distributor Assy	9371178004	
163-2	Thermistor Spring-A	313728262708		743	Remote Control Unit Case	9305642014	
164	Fan Motor Assy-IN	9601388012		759	Intake Grill-F	9368541040	
169	Cross Flow Fan Assy	9368586003		764	Drain Cap	9367677009	
178-1	Rubber (Motor)	9368575007		815	Terminal	9306489106	
199	Step Motor	9900020019		846	Relay G5NB-1A	9701316014	
233	Power Transformer	9900069018		855	Cover Display	9369264016	
236	Controller PCB Assy	9704714091		855-1	Cover Display-B	9369594014	
240	Remote Control Unit	9371190112		855-2	Cover Display-C	9369683015	
321	Flap	9368544010		938	Control Box Cover-R	9369631009	
329	Coupling Pipe Assy	9369241000		942	Control Box Cover	9368611002	
338	Motor Holder-A	9368550004		960	Diffuser Assy	9369346019	
338-1	Motor Holder-B	9368551001		963	Fan Guard	9368588007	
338-2	Motor Holder-C	9368769000		963-1	Fan Guard Holder	9368554002	
385	Indicator PCB Assy	9702307011		998	Bypass Pipe-A	9369238000	
401	Wall Hook Bracket	9368579005		999	Bypass Pipe-B	9369239007	

When you order parts, please make a photocopy of this page and fill the number of the parts in the "Order" column.

INDOOR UNIT

Ref. No.	Description	Part No.			Ord. Q'ty
		ASY12LMACW	ASY9LMACW	ASY7LMACW	
34	Capacitor (Fan motor)	9900089061	9900089061	9900089061	
63	Front Panel Assy	9312417100	9312417100	9312417100	
65	Flow Control Panel-Z	9306058043	9306058043	9306058043	
69	Louver-A	9306055028	9306055028	9306055028	
74	Filter	9305444014	9305444014	9305444014	
108	Base	9309755062	9309755062	9309755062	
109	Casing	9306052027	9306052027	9306052027	
122	Shaft Holder-B	9303066010	9303066010	9303066010	
127	Drain Hose Assy	9305550029	9305550029	9305550029	
146	Evaporator Assy	9373044017	9373044017	9373044017	
151	Control Box	9330007017	9330007017	9330007017	
158	Connecting Pipe Assy	9306416010	9306416010	9306416010	
164	Fan Motor Assy-IN	9601171010	9601171010	9601171010	
169	Cross-Flow Fan Assy	9307836015	9307836015	9307836015	
178	Motor Cushion-M	9601302018	9601302018	9601302018	
184	Thermistor Spring	313728262708	313728262708	313728262708	
196	Clamp SKB-150	313035356905	313035356905	313035356905	
233	Power Transformer	9900028015	9900028015	9900028015	
236	Controller PCB Assy	9705289031 (EZ-00309HSE-C)	9705289024 (EZ-00308HSE-C)	9705289017 (EZ-00307HSE-C)	
240	Remote Control Unit	9371190174	9371190174	9371190174	
281	BRACKET(PIPE)	9330011014	9330011014	9330011014	
283	Bushing-A	9303529010	9303529010	9303529010	
323	Louver-B	9306056025	9306056025	9306056025	
385	Indicator PCB Assy	9705296015	9705296015	9705296015	
401	Wall Hook Bracket	9304358008	9304358008	9304358008	
440	Flow Control Panel-U	9306057046	9306057046	9306057046	
522-1	Gear-A	9306062002	9306062002	9306062002	
523	Gear Bracket	9306407001	9306407001	9306407001	
652-1	Thermistor Holder Pipe	313714262805	313714262805	313714262805	
687	Earth Terminal	313681304205	313681304205	313681304205	
759	Intake Grille	9330001015	9330001015	9330001015	
764	Drain Cap Assy	9304150008	9304150008	9304150008	
767-1	Bottom Cover	9330004016	9330004016	9330004016	
777	CLAMPER(GRILL)	9306755010	9306755010	9306755010	
815	Terminal	9900040055	9900040055	9900040055	
850	Window (Receiver)	9330003019	9330003019	9330003019	
872	Indicator Case	9330009011	9330009011	9330009011	
873	Lamp Cover	9330014015	9330014015	9330014015	
874	Control Box Cover	9330008014	9330008014	9330008014	
875	Power Supply PCB Assy	9705294011	9705294011	9705294011	
876	Step Motor	9900139018	9900139018	9900139018	
962-1	Guard Holder-L	9306678012	9306678012	9306678012	
962-2	Guard Holder-R	9306677015	9306677015	9306677015	
963	Fan Guard	9305751013	9305751013	9305751013	
xx	Thermistor pipe	9702039059	9702039059	9702039059	
xx	Thermistor room	9700801115	9700801115	9700801115	

OUTDOOR UNIT

Ref. No.	Description	Part No.	Ord. Q'ty	Ref. No.	Description	Part No.	Ord. Q'ty
		AOY24LMAM2				AOY24LMAM2	
2	Fan Guard	9371187013		335	Accumulator Holder Rubber	9354022010	
4	Emblem	9351355005		343	Solenoid	9900165079	
5	Front Panel	9371924014		344	4-Way Valve	9900163013	
7	Connecteur Cover (Cabinet)	9366398004		345	Joint Pipe (3Way) Assy	9373729129	
12	Base Assy	9371920078		346	Expansion Valve Assy	9373729068	
13-1	3-Way Valve	9372205044		348	Pressure Switch Assy	9373729044	
13-2	2-Way Valve	9372204054		349	Capirally Assy	9373729211	
13-3	3-Way Valve	9372205051		361	Accum Support Assy	9372252017	
14	Valve Cover	9372796016		527	Protective Net	9371934013	
16	Condenser Assy	9372181096		734	Top Panel	9372304013	
26-1	Compressor Cover A	9373730019		---	Gasket (Comp)	9373266013	
26-2	Compressor Cover B	9373730026		---	Washer (Rubber) (Comp)	9358078006	
29	Separate Wall	9372795019		---	Compressor pressure switch	9900186012	
31	Controller PCB Assy	9705285019		---	Compressor thermal switch	9373263012	
33	Control Cover	9372792018		---	Thermistor Valve	9900194017	
39	Propeller Fan Assy	9366378013		---	Thermistor discharge	9704219039	
41	Motor Induct	9601671046		---	Heat exchanger thermistor	9704220059	
45-1	Motor Bracket	9371929019		---	Thermistor outdoor	9703516047	
45-2	Motor Bracket-Top	9371931012		---	Thermistor heat sink	9900195014	
45-3	Motor Bracket-Center	9371930015		---	Special Nut M8 (Comp)	9355091008	
45-4	Motor Bracket-Bottom	9371932019		---	Condenser Sub Assy	9372313121	
46	Compressor Assy	9373262015		---	Thermister Holder Pipe	313714262805	
64	Side Panel L	9371926018		---	Clip (Cable)	9352715006	
65	Side Panel R	9371927015		---	Br Sheet	9363708042	
85	Valve Plate	9371928036		---	Relay	9900117016	
108	Rubber Seat (Comp)	9358080009					
109	Terminal Cover (Comp)	9373264019					
260	Receiver Tank Assy	9373426011					
273	Strainer Assy	9366602019					
334	Accumulator	9368391003					

Inverter Assy

Ref. No.	Description	Part No.	Ord. Q'ty
31	Controller PCB Assy	9705285019	
---	ACTPM	9703457012	
---	Capacitor for PCB	9705387010	
---	Fan Capacitor	9900270049	
---	Fuse	0600086039	
---	Terminal 8P	9900203047	
---	Fuse Holder	0501454012	
---	Terminal 2P	9701971015	

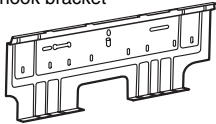
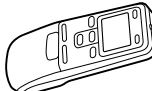

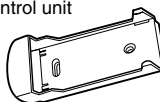
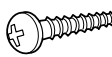
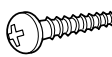

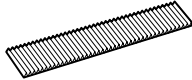
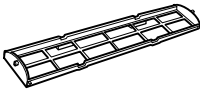
STANDARD ACCESSORIES

INDOOR UNIT ACCESSORIES

Models : ASY12LMACW, ASY9LMACW
ASY7LMACW

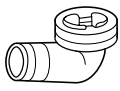
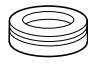

Name and Shape	Part No.
Wall hook bracket 	9304358008
Wall cap-B 	313714296205
Remote control unit 	9371190174 (AR-JW17)
Battery (penlight) 	0600185534
Remote control unit holder 	9305642014
Cloth tape 	9308117007
Tapping screw (big) ($\phi 4 \times 20$) 	301141164200
Tapping screw (small) ($\phi 3 \times 12$) 	0700019036
Air cleaning filter 	DEODRANT FILTER 9310441015 ELECTRIC FILTER 9310442012
Air cleaning filter frame 	9305445011
Adapter D (1/2" → 3/8") 12.7 mm → 9.52 mm 	9Q model only 9370244007

Model : ASY18LMA-W

Name and Shape	Part No.
Wall hook bracket 	9368579005
Remote control unit 	9371190112 (AR-JW11)
Battery (penlight) 	0600185534
Remote control unit holder 	9368847012
Tapping screw (big) ($\phi 4 \times 20$) 	301141164200
Tapping screw (big) ($\phi 4 \times 12$) 	301171164129
Tapping screw (small) ($\phi 3 \times 12$) 	301141533125
Air cleaning filter 	DEODORANT FILTER 9370527018 ELECTRIC FILTER 9370528015
Air cleaning filter frame 	9368568009

OUTDOOR UNIT ACCESSORIES

Model : AOY24LMAM2

Name and Shape	Part No.
Drain pipe 	9303029015
Drain cap 	313166024302
Adapter D (1/2" → 3/8") 12.7mm → 9.52mm 	9370244007

0402G2536